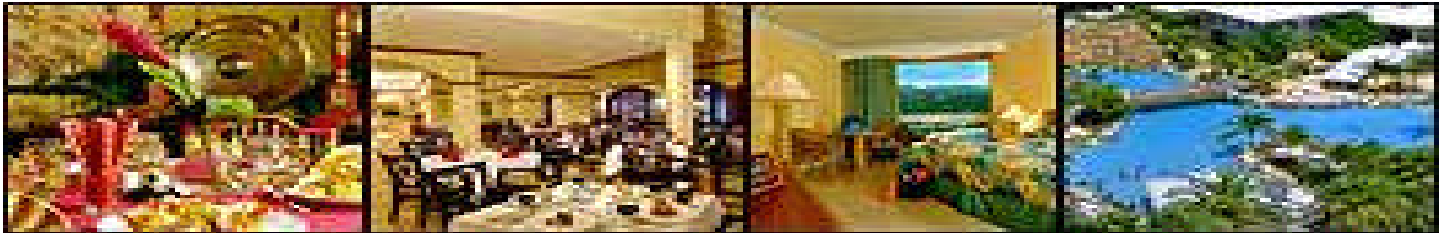




PHARMACEUTICAL SOCIETY OF JAMAICA RETREAT, JUNE 19-21, 2009

Theme: **“THE CHANGING FACE OF PHARMACY”**



ACCOMMODATION:

March 1-May 19

Single US\$190

Double US\$240

Triple US\$320

Children 3-12 US\$35

After May 19

Rooms not guaranteed

FOR HOTEL ACCOMMODATIONS

CALL: 974-2201/ FAX: 974-2289

DAY PARTICIPANTS

Day Pass Required US \$70

CONFERENCES PASS US\$40

(Access to conference facilities)

REGISTRATION

Early Bird \$1,500

Members

\$2,500

Non Members

Pharmacy Students/ Technicians with ID \$1500

After MAY 20

\$ 2,000 Members

\$ 3,000 Non Members

CONTINUING EDUCATION

Early Bird \$2,000 (per day) MEMBERS

\$2500 (per day) NON MEMBER

After MAY 20

\$2,500 (per day) MEMBERS

\$ 3,000(per day) NON -MEMBERS

For further information contact the PSJ SECRETARIAT at 978-4103/4199 or email:

psja@anbell.net